



Cola[®]Carb TDC

INCI: Trideceth-7 Carboxylic acid

CAS: 56388-96-6

DESCRIPTION

Cola[®]Carb TDC is a mild anionic surfactant with good hard water tolerance. It thus improves the storage stability of amphoteric formulations, and can be used in combination with all ionic classes of surfactants. **Cola[®]Carb TDC** has applications in personal care and industrial formulations.

APPLICATIONS

Personal Care

Baby shampoos
Liquid soaps
Shampoos
Shower gels
Hair sprays

Industrial

Coatings
Metalworking
All purpose cleaners
Dishwashing Liquids
Laundry

BENEFITS

- Will improve the performance of new and used cleaner baths as well as extend the bath life.
- Especially effective in baths containing alkalis and properties.
- Possesses a very strong wetting action over a broad pH and temperature range.
- Provides a dense foam cover, which holds back corrosive spray and vapors.
- Compatible with anionics.

TYPICAL PROPERTIES

Appearance	Clear Amber Liquid
Color, Gardner '98	3 Max.
Acid Number	45.0 – 52.0
% Solids	90.0 – 92.0
pH (1% DI water)	3.0 – 4.0
Solubility (1% DI water)	Cloudy, translucent dispersion
Sulfuric Acid:	1.0 % Max.
NaCl:	1.0 % Max

Ross-Miles Foam Height (1% active), mm

Immed.	160
1 minute	140
5 minutes	135

Draves Wetting (1 % active) Immediate

Solubility, 10% active solution

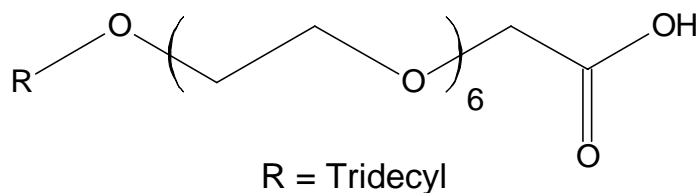
25% NaOH	Cloudy
25% H ₂ SO ₄	Cloudy

Compatibility, 5% active solution

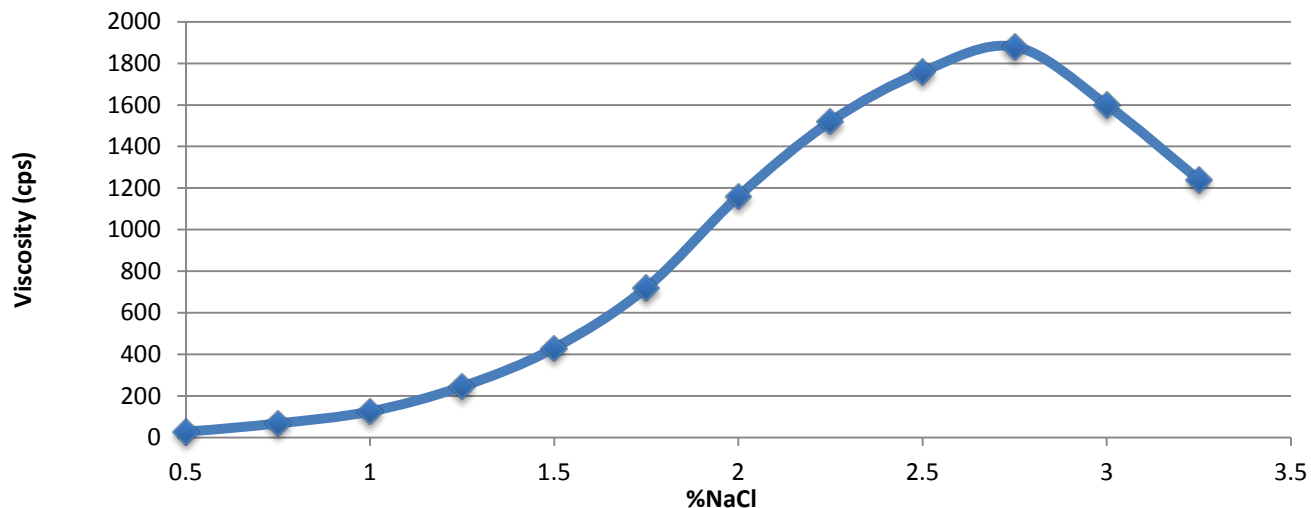
5% active SLS	Completely soluble
5% active DSLS	Completely soluble

Cola[®]Carb TDC shows a typical viscosity-building response to salt when formulated with a sulfate and betaine in a shampoo blend.

STRUCTURE



SALT CURVE on SLES-2/TDC/LMB (63.2/21.1/15.8)



FORMULATION

SHAMPOO BLEND

	Wt. %
Water	69.35
EDTA	0.10
Kathon	0.05
Suga [®] Nate 160	6.00
Cola [®] Carb TDC	6.00
Cola [®] Teric LMB	4.50
Glucamate DOE-120	3.00
Citric Acid (50%)	as needed
pH (as is):	6.30
%Solids:	12.54
Draves wetting (1%), sec.	Immediate
Ross Miles (1%), mm	
Immed.	170
1 min.	145
5 min.	140

STORAGE AND HANDLING

Cola[®]Carb TDC should be stored in closed containers when not in use. A Safety Data Sheet is available upon request. Available in poly drums.

Colonial Chemical, Inc. *Natural Surfactants*

225 Colonial Drive · South Pittsburg, TN 37380 · Phone: 423-837-8800 · Fax: 423-837-3888

Technical information contained herein is believed to be accurate. However, it is furnished without charge or obligation and is given and accepted at the recipient's sole risk. No guarantee of the accuracy of the information is made and the products discussed are sold without conditions or warranties expressed or implied. No warranties beyond the guarantee that Colonial Chemical products are manufactured to specs are expressed or implied, since the use of material is beyond our control. Purchasers should make their own tests and determine suitability of the product for their particular purposes. Nothing contained herein shall be considered a recommendation for any use that may infringe upon patent rights. Safety information regarding this product is contained in its Material Safety Data Sheet.

© 2012, Colonial Chemical, Inc. All rights reserved.

Updated December 2012