



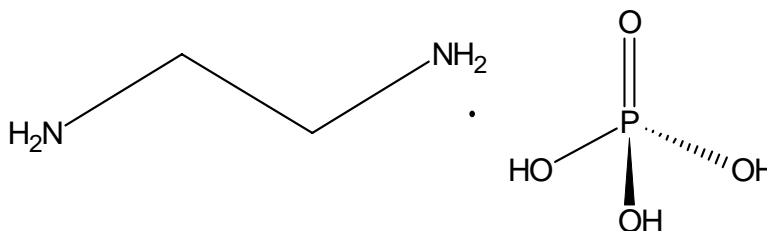
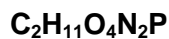
Cola[®]Cor EDP

INCI NAME: Phosphate Amine
CAS No. 14852-17-6

DESCRIPTION

Cola[®]Cor EDP is a corrosion inhibitor for use in metalworking fluids. **Cola[®]Cor EDP** provides corrosion protection for ferrous and non-ferrous metals in the liquid and vapor phase. **Cola[®]Cor EDP** provides corrosion protection and phosphorous for lubrication in metalworking fluids.

Cola[®]Cor EDP has also show utility in un-reactive type fire retardant additives for polymers and plastics. In addition **Cola[®]Cor EDP** has been used to slow cement curing.



TYPICAL PROPERTIES

Appearance:	Clear water white
Alkali:	560
pH 10%:	10.5
Acid #:	<1
Solids:	41%
Phosphorous:	8.2%
Water Soluble	

APPLICATIONS

- Corrosion inhibitor
- Extreme pressure lubricant
- Aerosol can corrosion inhibitor
- Plastics flame retardant
- Cement, retardant curing

Cast Iron Chip Rust Test

Cola[®]Cor EDP passed at a concentration of 0.5% in water. No rust.

RESPONSIBLE CARE

For complete safety, health, personnel protection and first aid information, refer to the Material Safety Data Sheet (MSDS), which can be ordered by calling **Colonial Chemical, Inc.** In the event of a large spill, call the following Chemtrec emergency phone number: 1-800-424-9300.

LAST UPDATED 07/21/2006

WARRANTY

Colonial Chemical guarantees that its products meet published specifications. No other warranties or guarantees are expressed or implied because the use of this material is beyond the control of Colonial Chemical.

Colonial Chemical, Inc.

www.colonialchem.com



ColonialChemical, Inc.